

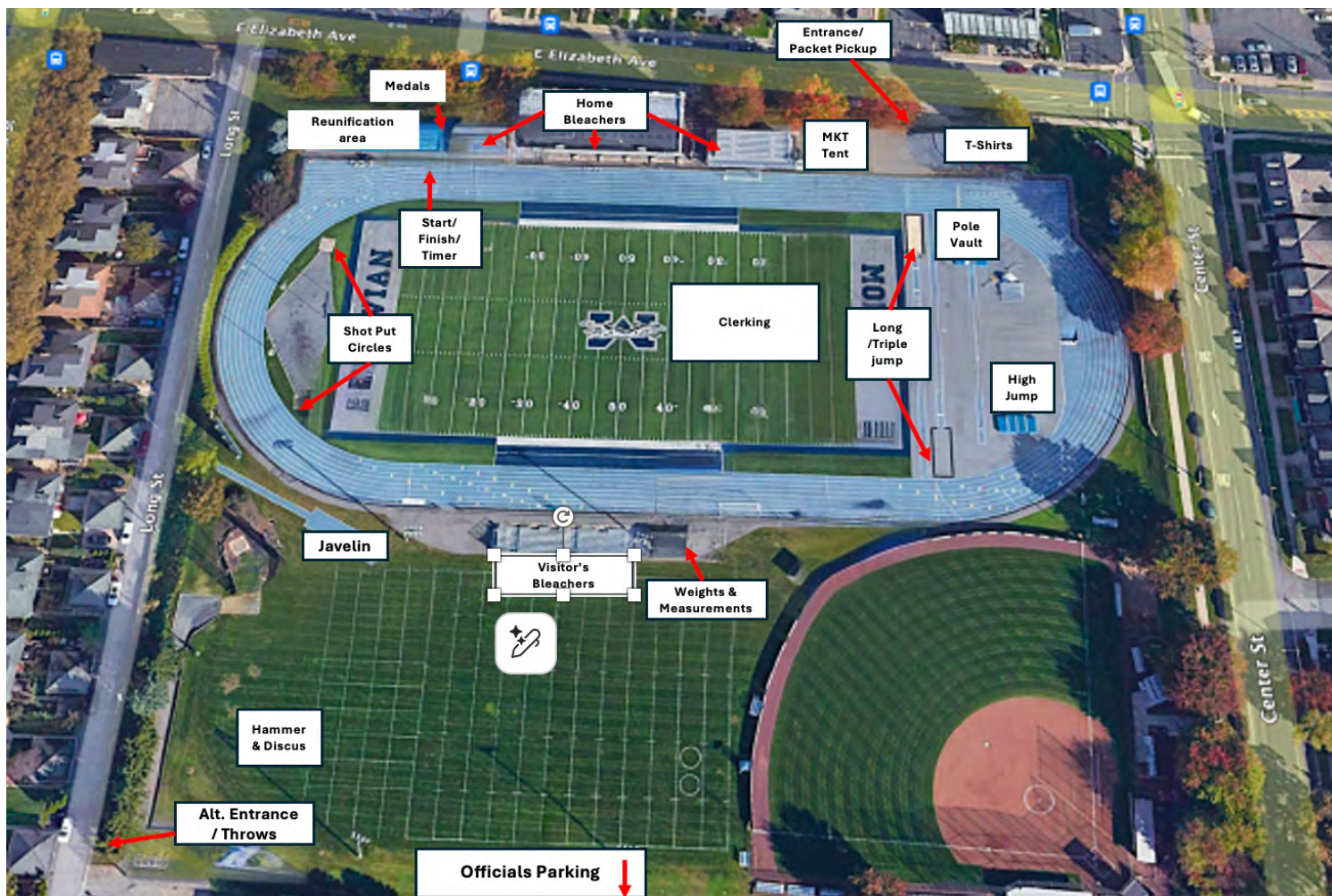
# 2026 USATF Mid-Atlantic Association Junior Olympic Track & Field Championships

June 6-7, 2026

## Facility & Parking Information

Moravian University Track & Field - Timothy Breidegam Track Facility Map

Track address: 34 East Elizabeth Avenue, Bethlehem, PA 18018



## Timothy Breidegam Track Facility Information

**Spectator's Admission Fee:** Admission to the stadium by [Athletic.net](https://athletic.net)  
Cash App costs \$7 per day or \$12 for both days: [HERE](#)

**At the gate:** will cost \$15 for one date and \$20 for two dates, and Children under five (5) admitted free.

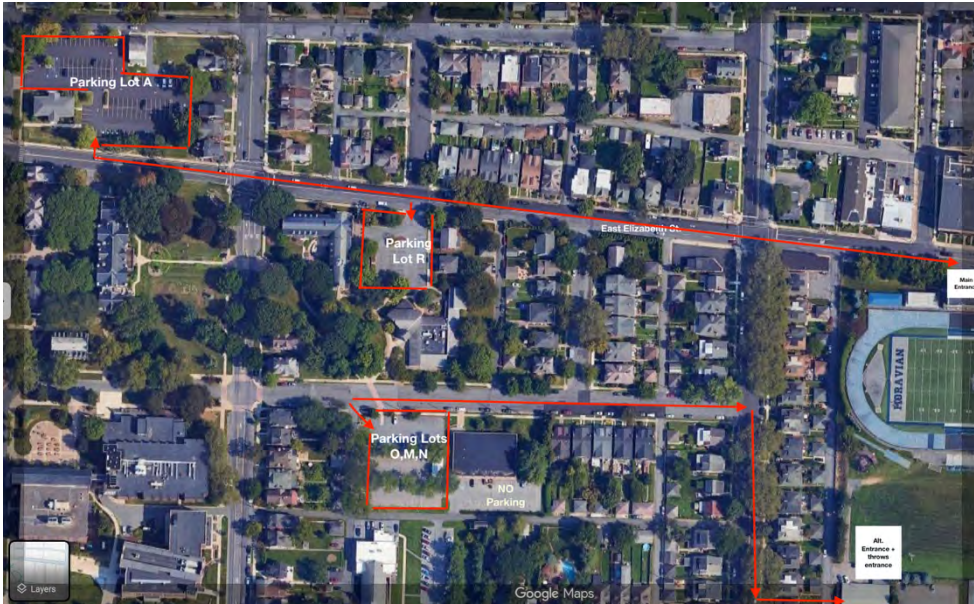


**Team Tents/Camps:** Team Tents/Camps can be set up anywhere around the outside of the track or in the stands.

# Timothy Breidegam Track Parking Information

**Spectator Parking:** Spectators may park anywhere on the street or on campus. Please be respectful of the residential homes in the area surrounding the track.

**Parking Lots A, R, M, N, O** is the designated campus parking lots closest to the Breidegam Track Facility



## Directions (Track address: 34 East Elizabeth Avenue, Bethlehem, PA 18018)

**From the north:** I-81 South to I-380 South to I-80 East. Take exit 302 A off I-80 onto Route 33 South. Follow Route 33 to Route 22 West into Bethlehem. To continue, see directions from Route 22 below.

**From the south:** Northeast Extension of the Pennsylvania Turnpike (I-476 north) to Lehigh Valley exit 56. Follow 22 East to Center Street (Route 512). To continue, see directions from Route 22 below.

**From the east:** I-78 West to exit 71; Route 33 North to 22 West; West on Route 22 into Bethlehem. See directions from Route 22

**From the west:** I-78 East to exit 51; Route 22 East into Bethlehem. To continue, see directions from Route 22 below.

**From Route 22:** Exit at Center Street (Route 512); Turn left off the exit ramp. Continue south on Center Street (2 miles) to the traffic light at Washington St; turn right onto Washington and go to the third street (New St.) and turn left; go to the 1st traffic light (Elizabeth Ave) and turn left.

### Arriving by Bus or Air:

Two bus companies -- Greyhound and Trans Bridge -- provide passenger service to the Bethlehem Bus Terminal one mile from campus at Adams and Mechanic Streets on the south side of Bethlehem.

[The Lehigh Valley International Airport](#) is a 15-minute drive from campus. It is served by several national and regional airlines.